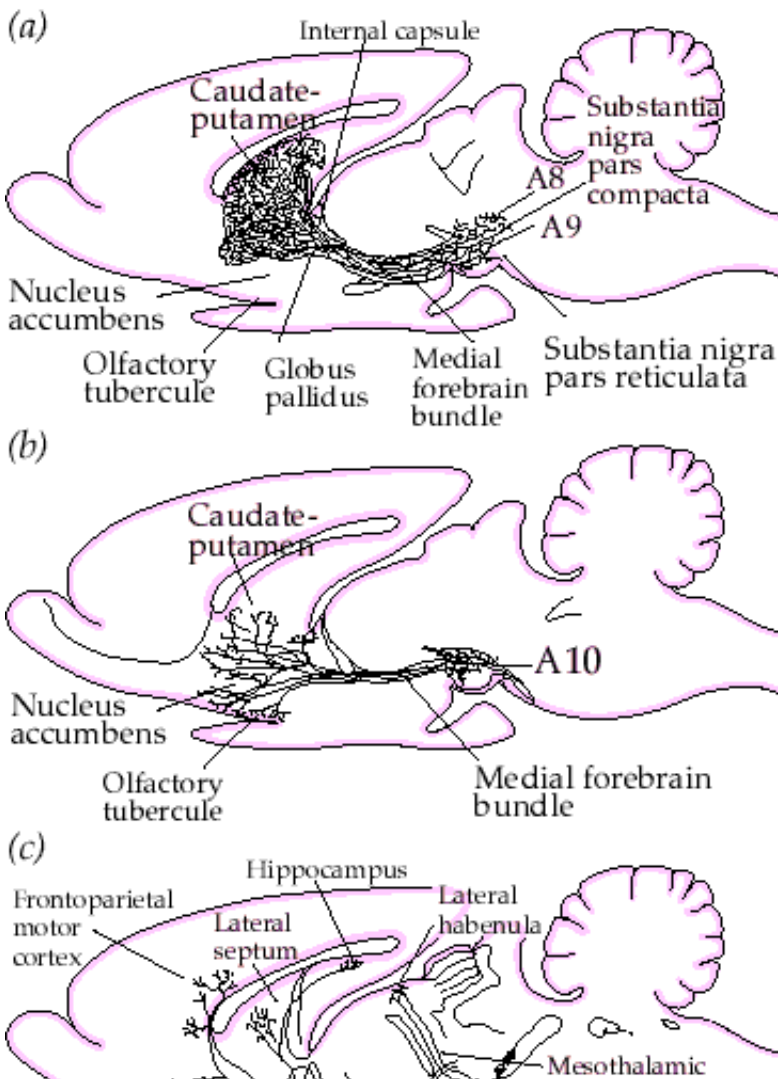


Dopaminergic Pathways

[[Home](#)] [[Up](#)]



Dopaminergic Pathways in the Rat Brain



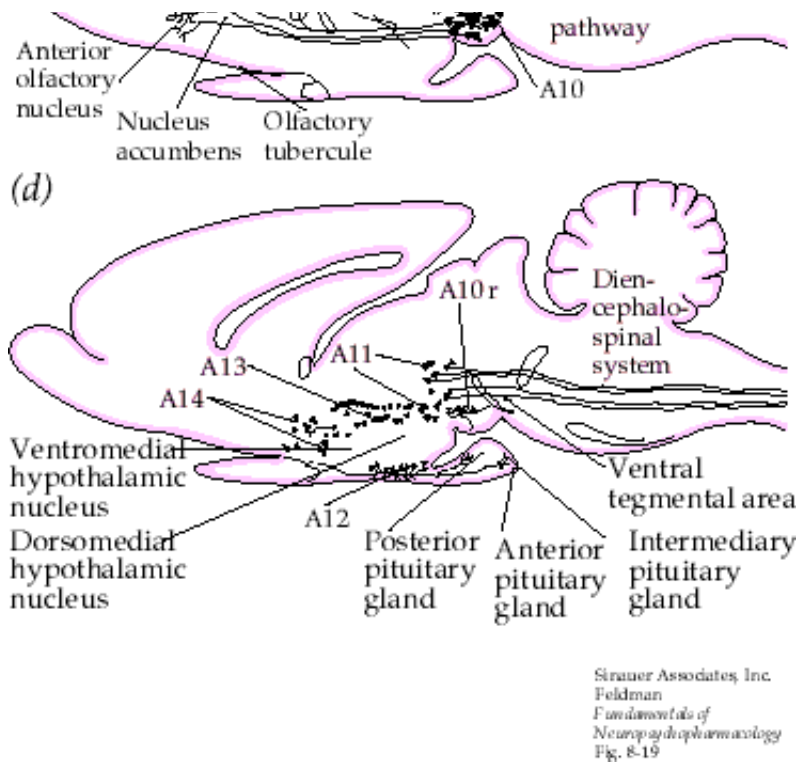


Fig. 8.19 Dopaminergic pathways in the rat brain.

Dopaminergic cell bodies are represented by triangles and axonal fibers by solid lines.

- (a) Dorsal mesostriatal (nigrostriatal) system.
- (b) Ventral mesostriatal (mesolimbic) system.
- (c) Mesolimbocortical and mesodiencephalic (mesothalamic) systems.
- (d) Periventricular, diencephalo-spinal, incerto-hypothalamic, and tuberohypophyseal systems.

Groups A8-A15 represent dopaminergic cell groups. (After Fuxe et al., 1985)